



Co-funded by  
the European Union

---

# Training Course

# ENVIRONMENTAL

# Thinking



Berlin, Germany  
14-23 of January 2023

# Partners



**CHANCE International (Germany)**

[www.chance-berlin.org](http://www.chance-berlin.org)

E-mail: [chance.international@chance-berlin.com](mailto:chance.international@chance-berlin.com)



**Youth Non-Formal Cultural and Educational Center "DiGrease's Buffoon Theatre" (Poland)**

[www.facebook.com/medievalbelarus/](http://www.facebook.com/medievalbelarus/)

Email [fireshow@tut.by](mailto:fireshow@tut.by),

Contact person - Aliaksej Burnosenka



**Hellenic Youth Participation (Greece)**

[www.hellenicyouthparticipation.com](http://www.hellenicyouthparticipation.com)

Email: [hellenicyouthparticipation@yahoo.gr](mailto:hellenicyouthparticipation@yahoo.gr),

Contact person - Pablo Andres



**ASSOCIATION of YOUNG EDUCATORS LOVING DEMOCRACY**

[www.egeder.com](http://www.egeder.com)

Email [ekremtekatli@hotmail.com](mailto:ekremtekatli@hotmail.com)

Contact person - Ekrem Tekatlı



**Mittetulundusühing Progress Center**

[www.progresscenter.eu](http://www.progresscenter.eu)

Email [progresssestonia@gmail.com](mailto:progresssestonia@gmail.com)

Contact person - Artjom Malahhov

# About the project

The main aim of the project is to raise awareness of ecological and environmental protection and practices among all participants in their everyday life and work.

During the project, the participants will create local, regional, and international networks and encourage them to actively participate in finding solutions for the current ecological problems in their regions.

Within this project, we will refresh and share our knowledge on sustainability, test methods and instruments, and develop innovative and creative concepts and projects.

# Participants

The training course is open for educators - trainers, teachers, facilitators, youth workers, and youth leaders.

---

## CONDITIONS OF PARTICIPATION

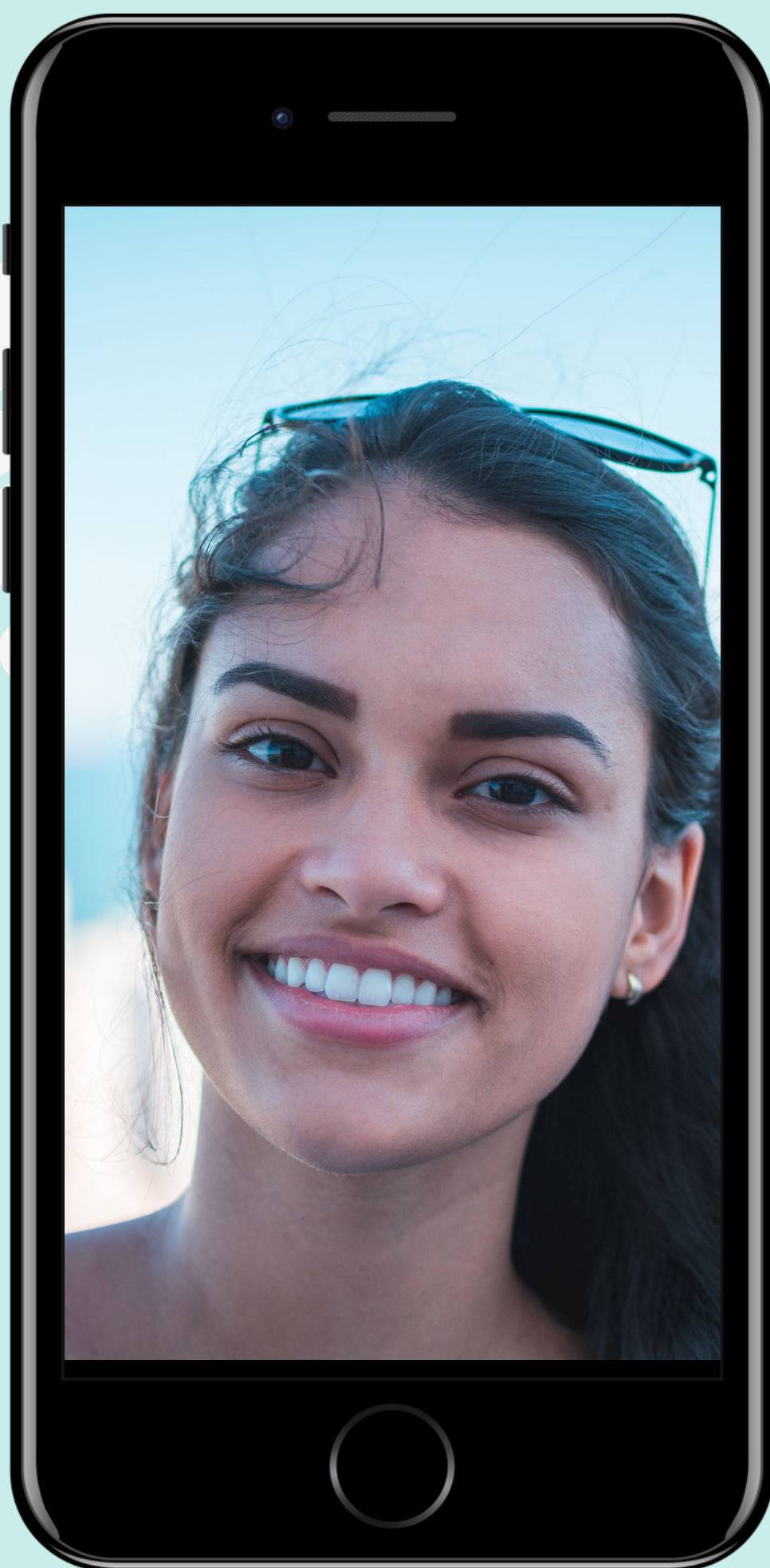
- 18+
- truthful engagement and motivation to study the theme of the project, willingness to share individual and professional knowledge, and to learn in the international group
- participation in all the stages of the project
- excessive commitment to follow-up activities and networking



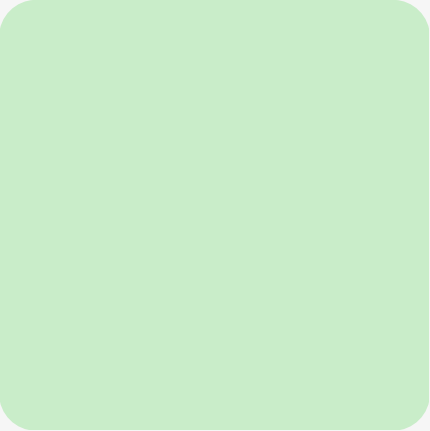
---

To apply, please fill out the  
form

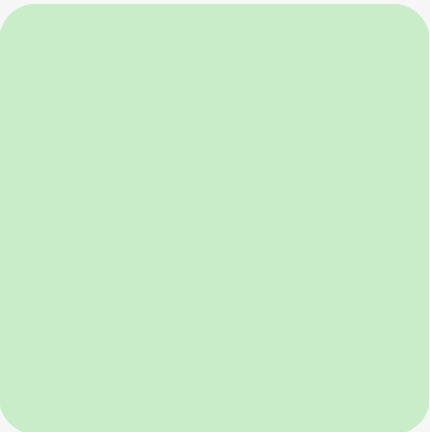
<https://chance-berlin.org/environmental-thinking-january-2023-eng>



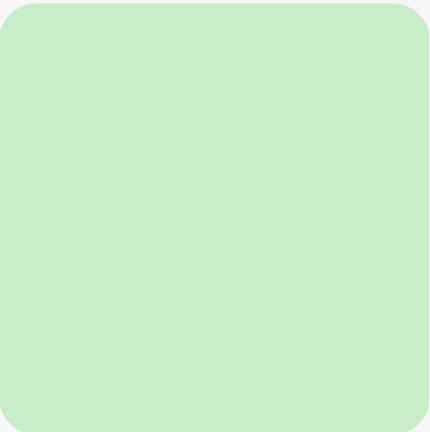
# WHAT NEXT YOU HAVE TO KNOW



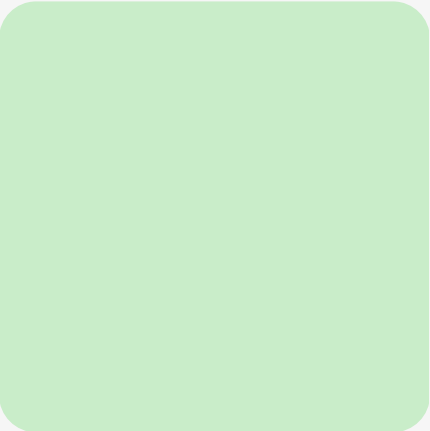
if you are selected, you will receive a confirmation email from a project organizer



do not buy any tickets without the approval of your travel plan by the project organizer



invitation letters (in the case of need) will be prepared by the organisers



before the training starts, there will be organized the preparation meeting with all the participants and organizers team, in order to get to know each other and discuss technicalities



# Financial conditions

---

The project is funded  
by Erasmus+  
Programme through  
German NA.

Accommodation,  
food, travel costs,  
and exchange  
activities  
will be covered by  
the organizers.



# REIMBURSEMENT



Travel costs and visa costs will be reimbursed based on actual costs travel costs to the maximum which is determined by the European Commission (based on the actual distance)

Germany - max 180 euro

Poland - max 180 euro

Estonia - max 275 euro

Turkey - max 275 euro

Greece - max 275 euro





# Important

- the costs will be reimbursed to the bank account of the participant after receiving all documents and filling in the PARTICIPANTS REPORT
- following the guidelines of the Erasmus+ Program and internal regulations, the travel must be released by the participants in a direct way within a maximum of 2 days (before or after activity days), in case of long pauses or indirect routes (holiday travel), there is no reimbursement of travel costs
- the travel documents are plane tickets, invoices (not only boarding paper), but boarding also passes (for all the parts of air travel), ORIGINAL or electronic bus/train tickets
- in the case of the postage - it is borne by the participant
- the outgoing bank fees are borne by the organization, the incoming bank fees are borne by the participant

# Important

---

YOU ARE EXPECTED TO PARTICIPATE IN ALL THE ACTIVITIES UNLESS YOU ARE ILL. UNAUTHORIZED ABSENCE FROM ACTIVITIES AND WORKSHOPS IS NOT PERMITTED IF LESS THAN 90% OF THE PROGRAM IS ATTENDED, IT WILL NOT BE POSSIBLE TO BE REIMBURSED FOR THE TRAVEL COSTS.

# ACCOMMODATION



- The participants will be accommodated in Seminarhaus Weißensee
- the participants will live in same-gender bedrooms 4-6 people per room
- toilets and showers are common in the corridor
- towels, bed linen, fridge, and microwave at the disposal
- WIFI free
- meals will be standard for all the participants: breakfast, coffee – break, lunch, dinner
- any special requests regarding the meal e.g. allergies, the special diet should be communicated before the start of the activity

The address of the hostel is  
Indira-Gandhi-Straße 13,  
13088 Berlin.



# IMPORTANT

---

The food, provided during the project will be **VEGETARIAN**

---

It is **NOT** allowed to drink alcohol in the hostel

---

Breakfasts will be made by participants on a beforehand agreed schedule of 2-3 people per day

---

Within non-formal education we find it reasonable to foster community-based living, so please be prepared to take care of your space staying clean and nice to be at (no room services will be provided).

# WHAT TO BRING



- it is necessary to have insurance coverage
- comfortable clothes and shoes for workshops depending on the weather, slippers
- traditional food, drink, and souvenirs for intercultural evenings activities
- any medicaments you use and will be needed for you while staying



# Contact Us

CHANCE International

Website:

<https://chance-berlin.org/contact>

E-mail:

chance.international@chance-berlin.com

Phone: +49 176 62091741

Instagram:

@chance.international.berlin

Telegram:

@chance\_international\_berlin

Facebook:

facebook.com/ChanceBerlinIJB